



Client Focused. Technology Driven.

Petrochemical / LNG



A large industrial facility, likely a refinery or petrochemical plant, featuring several tall, white distillation columns and a complex network of silver-colored pipes and metal walkways. The sky is clear and blue.

Building lasting partnerships.

If you're looking for professional solutions, we have the experience and technology to serve the rapidly growing Petrochemical / LNG market. With a focus on safety and a commitment to quality, our team totally engages to achieve project objectives and earn your trust.

Engineering

Land Use Regulation & Land Planning
Government & Agency Coordination
Structural Design
Infrastructure - Roadways & Bridges
Traffic Engineering
Water Treatment & Storage
Sewer Collection & Treatment
Drainage Design
Flood Risk Management
Construction Engineering & Inspection
Project Management

Survey & Mapping

ALTA/ACSM Land Title Surveys
Boundary Surveys
Topographic Surveys
Hydrographic & Bathymetric Surveys
Construction/As-Built Pipeline Surveys
Subsidence Surveys
High Definition Laser Scanning
Dimensional Control
Unmanned Aerial Services – UAS Operations
(FAA Section 333 Exempt)
Underwater Acoustic Imaging

Technologies

Geographic Information Systems
Project/Asset Management Software
Software Development

Environmental

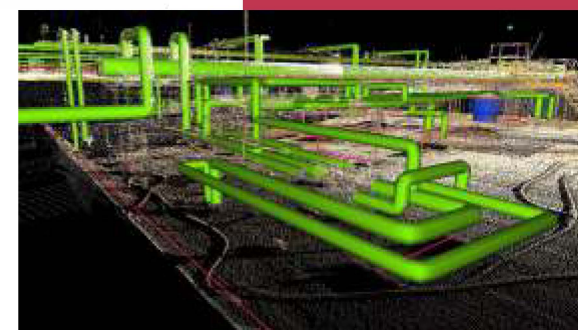
Government & Agency Permitting
Wetland Regulatory Compliance
Federal, State & Local Authorizations
Air Emission Permits
Water Discharge Permits
Compliance Reporting
Facility Inventory Reporting
Greenhouse Gas Reporting
Environmental Documents
Production Manuals
Site Characterizations
Environmental Audits
NEPA Assessments
Natural Resources Management
Delineation of Wetland Boundaries
Threatened & Endangered Species Surveys
Wetland Mitigation
Oyster Assessments

Since 1950, C. H. Fenstermaker & Associates, L.L.C. has provided professional services with a dedication to the success of our clients. A focus on safety and a commitment to quality work are paramount to the way we do business.

Our corporate office is centrally located in Lafayette, LA with offices to serve the Petrochemical and LNG industries in Lake Charles, LA, Baton Rouge, LA, Shreveport, LA, and Houston, TX.

High definition laser scanning provides invaluable detail for project planning and management. When accuracy is critical, this sophisticated surveying technique can save time and money.

Our dimensional control services give our clients peace of mind in knowing that fabrication is exact and project delays due to measurement or production errors are minimized.



Petrochemical / LNG CLIENTS

Advanced Refining Technologies, LLC
Axiall Corporation
Bechtel (Live Oak LNG, MS River LNG)
BioLab, Inc.
Burns & McDonald
CF Industries
Fluor Corporation
Freeport LNG
Magnolia LNG
Monsanto
Lotte Chemical
Phillips 66
ReCon
Technip
Trunkline LNG Company, LLC
Sasol Chemicals (USA) LLC
Westlake Chemical



Client Focused. Technology Driven.

Call 337.237.2200
or visit our website at
www.fenstermaker.com



C. H. Fenstermaker & Associates, L.L.C.

Louisiana Firm Registration No. VF. 0000154.
Texas Firm Registration No. 10028500