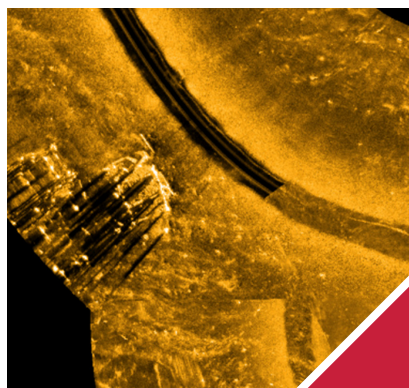




Pipeline Services

WHAT WE DO

- ✓ Alignment Routing and Alignment Sheets
- ✓ Preliminary & Right of Way Plats
- ✓ Construction Staking
- ✓ Weld Mapping
- ✓ As-Built
- ✓ GIS/Mapping
- ✓ Route Study/Risk Assessment
- ✓ Preliminary Civil Surveys
- ✓ Utility Locating & Marking (One Calls)
- ✓ Anomaly Stakeout
- ✓ Depth of Cover Surveys
- ✓ Navigable Waterways Inspections
- ✓ Post Hurricane Response Surveys
- ✓ Data Management/Standardization
- ✓ SPCC & SWPP Plans
- ✓ Wetland Delineation
- ✓ Cultural Resources
- ✓ Corps of Engineers 404 Permits
- ✓ DEQ Permits
- ✓ County/Parish Permits
- ✓ 192 & 195 Compliance
- ✓ Heavy Haul Road Analysis



NOTABLE PROJECTS

- ✓ Greenline Pipeline - 300 mile pipeline
- ✓ M2E3 & M2E4 - Combined 415 miles of pipeline
- ✓ Bayou Bridge - 162 miles of as-built pipeline
- ✓ Aegis 3 - 52 mile pipeline
- ✓ Feedstock/Ethylene - 30 miles of as-built pipeline
- ✓ Marathon Garyville - 65 mile pipeline
- ✓ Susquehanna Gathering System - 30 mile gathering system
- ✓ Dean Expansion - 30 mile pipeline
- ✓ Sweeny Pipeline Project - 28 mile pipeline
- ✓ Clovelly to St. James 30" Pipeline - 60 mile pipeline

Brent Boquet, Pipeline Market Leader

(985) 637-5302

brentb@fenstermaker.com

James Fontenot, Pipeline Director

(337) 290-0375

jfontenot@fenstermaker.com

C. H. Fenstermaker & Associates, L.L.C.